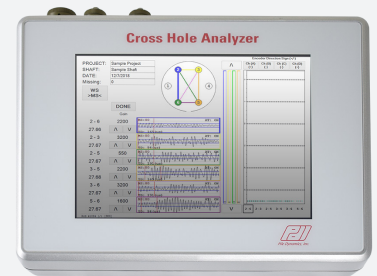


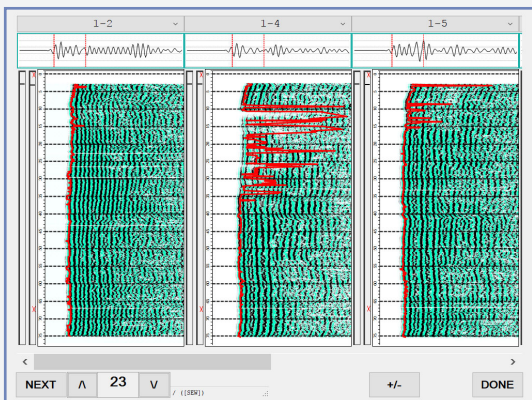
## Cross Hole Analyzer (CHAMP-Q)

The **CHAMP-Q** determines the quality and consistency of the concrete of drilled shafts, slurry walls, bored piles, cast-in-situ piles, and other types of concrete foundations, using the Crosshole Sonic Logging (CSLT) method.

- ✓ Up to four probes (six profiles) pulled at once for efficient data collection
- ✓ Includes color-coded cables for easy identification of probe location
- ✓ Performs real-time analysis onsite
- ✓ Optimized data entry for speed of testing and minimization of erroneous input



Conforms with ASTM D6760



### CHA-W Software

- Sonic Map: Signal strength versus time and depth in traditional waterfall diagram
- First Arrival Time: Signal travel time from transmitter to receiver, versus depth
- Wave-speed Plot: Wave-speed versus depth
- Wave-speed Table: Means, and standard deviations
- Energy or Amplitude Plot: Signal strength versus depth

### PDI-TOMO 3-D Tomographic Software (Upgrade Option)

- Provides a more precise location and shape of a defect detected through CSL data
- Generates easily comprehensible and professional outputs of the engineering analysis
- Offers an intuitive, tomographic, visual identification of the damaged areas

