

Specification

Device type	SPL-1500	SPL-500	SPL-500E
Type	pulsed precise scan technology		
Color	Grey	Grey	White
Scanning Range	1.5 ~ 1500 m (100% reflectivity on white)	1.5 ~ 620m (100% reflectivity on white)	1.5~370m (100% reflectivity on white)
Scanning Accuracy	3 mm @ 100 m	5 mm @ 100 m	5 mm @ 100 m
Scan Rate	2,000,000 pts/sec	1,200,000 pts/sec	500,000 pts/sec
Angular Accuracy	0.001° (H./V.)		
Scanning FOV	360° (H.) & 300° (V.)		
Laser Class	Class1 eye-safe (in accordance with IEC 60825-1:2014)		
Laser Wavelength	1550 nm, invisible		
Laser Beam Divergence	0.3 mrad (1/e)		
Interface	USB 3.0, external power supply, Ethernet		
Data Storage	USB 3.0 flash drive 128 GB (as default)		
Imaging Resolution	inbuilt (24.6 MP in total, 2 x 12.3 MP)		
Scanning Control	on-board 5-inch HDR (720x1280) color touch display or web interface remote control on tablet/smartphone		
Dual-axis Compensator	compensating range±15°; compensating accuracy 0.008°	compensating range±10°	compensating range±10°
Sensor	integrated, height relative (to a fixed point) to detect	altimeter	N/A
	on board	IMU Inertial navigation System	on board
	integrated, orientation to detect	compass	N/A
	integrated tracking GPS(L1)& Beidou(B1) dual-constellation	GNSS	N/A
Power Supply	rechargeable battery (as default); external supply by 19V DC		
Power Consumption	25 W (while scanning)		
Battery Endurance	max. 4 h per unit (one unit needed for operation only)		
Operating Temperature	-20°C ~ +60°C		
Storage Temperature	-35°C ~ +70°C		
Humidity Resistance	non-condensing		
Ingress Protection	IP64 (in accordance with IEC 60529)	IP54 (in accordance with IEC 60529)	IP54 (in accordance with IEC 60529)
Net Weight	6 kg (without battery); 6.45 kg (with battery)		
Dimension	247x107x202mm		

Configuration

No.	Item	Description	Quantity
standard configuration			
①	3D Laser Scanner Unit	model: SPL-500	1
②	Lens Protective Cover		1
③	USB Flash Drive	USB 3.1, 256 GB	1
④	Rechargeable Battery	28.8 V, 3400 mAh, 97.92 Wh	2
⑤	Battery Charger		1
⑥	Charger Adapter		1
⑦	Carrying Case		1
⑧	Lightweight Tripod	packed with a soft bag	1
⑨	Software Dongle Key	for post-processing AcuteLas Studio	1
optional accessories			
⑩	scanner sphere	6 nos. as one set, packed in a separate case ready to place in front and behind both	6
⑪	Backpack		1



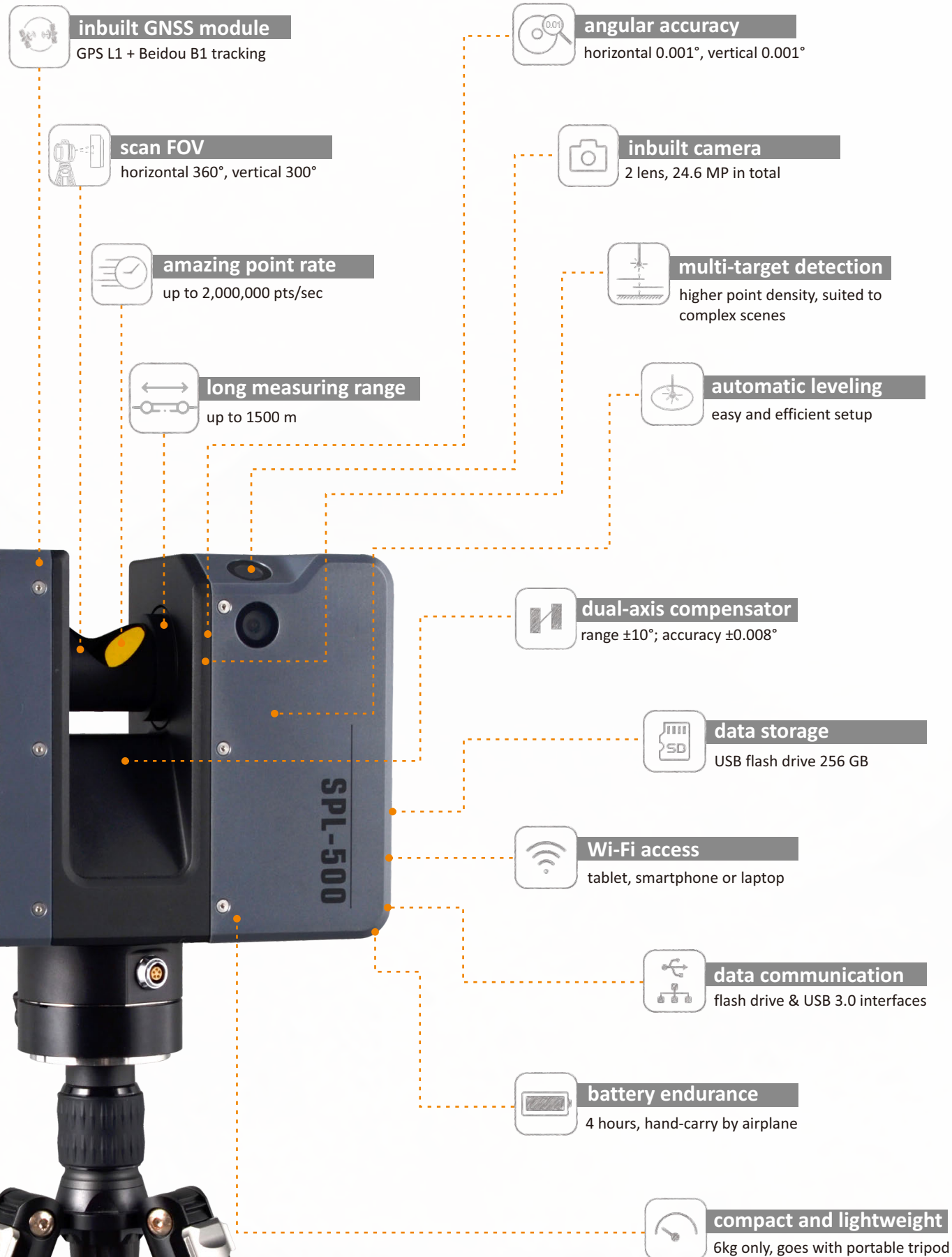
AcuteLas Series

SPL-1500/SPL-500/SPL-500E

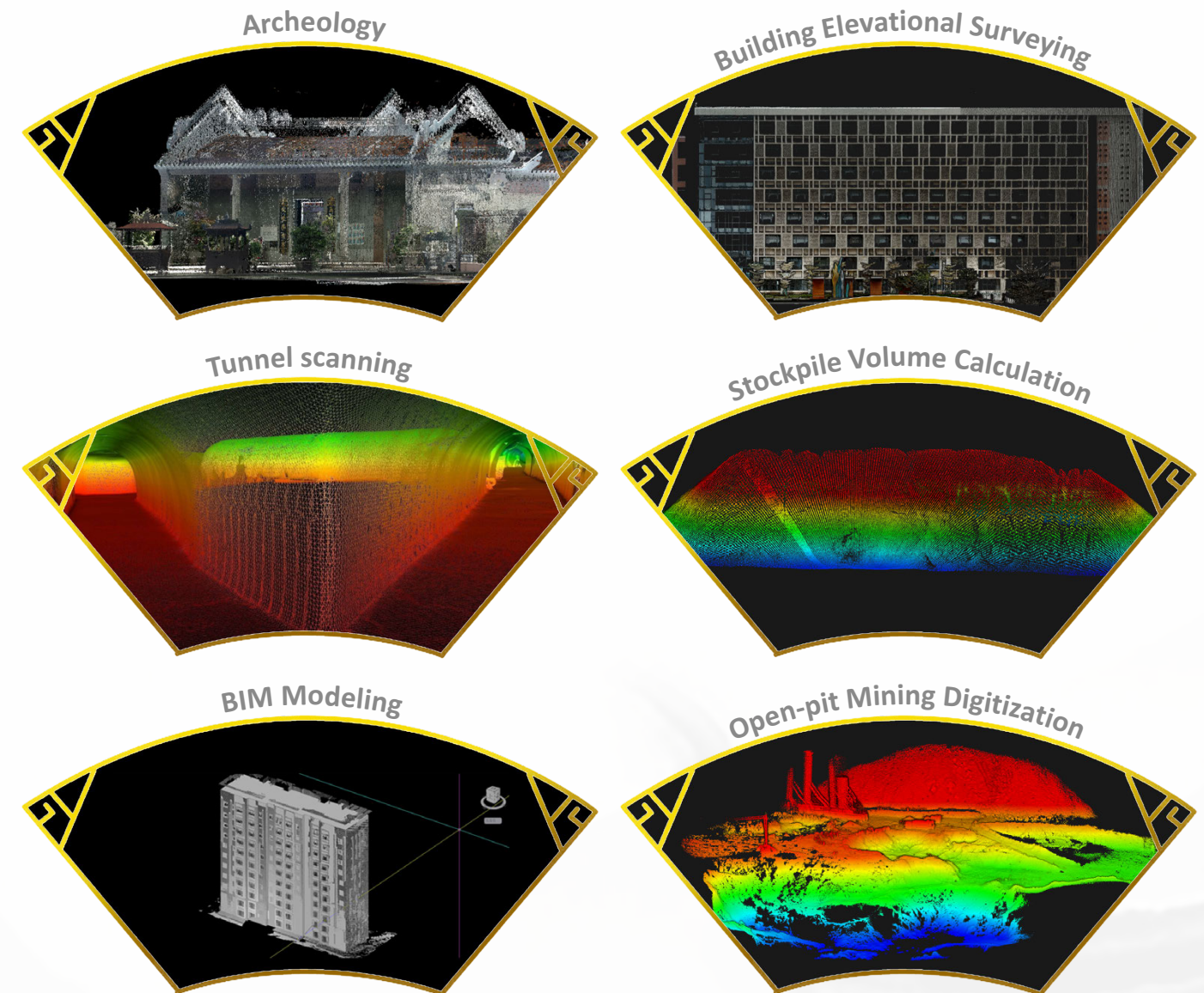
Highly cost-effective high precision 3D laser scanner



Features

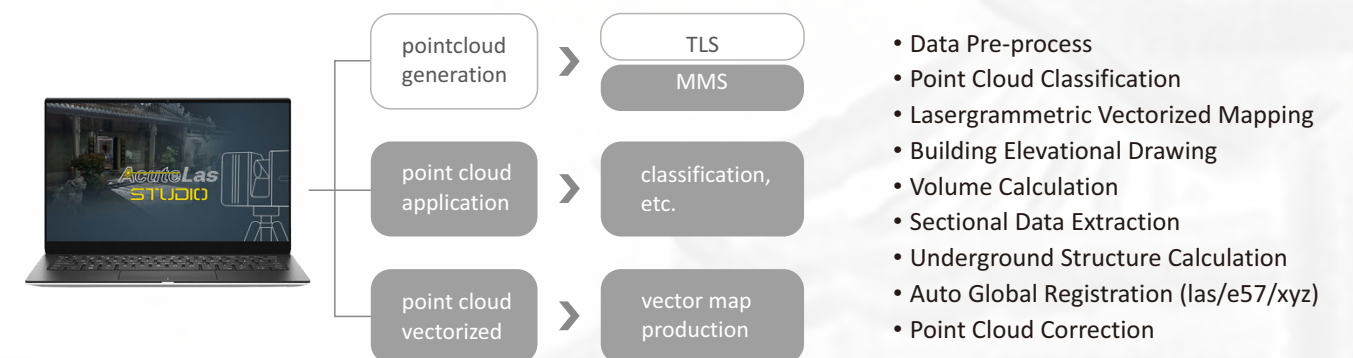


Applications



Software

Post-processing software-AcuteLas Studio



Note: the grey-box parts above are functional add-ins