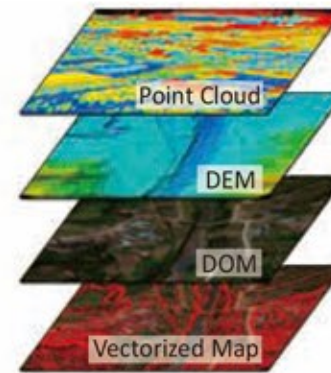


# LiDARs R1000II Series

## FEATURES

- Maximum working range up to 1350 m
- Automotive scanning roadway up to 600 km per day
- Airborne scanning area coverage up to 960 sq.km per day
- SUV/helicopter/All-Terrain-Vehicle/vessel multi-platforms



## HARDWARE

**Option A: DSLR camera** (lower-altitude aerial mode)

22.3 MP, supports imaging stabilization

**Option B: industrial-level metric camera** (medium-altitude aerial mode)

100 MP, supports imaging stabilization

### Laser Scanner

to fast obtain geo-spatial information of ground objects, **range 1350 m max.** accuracy  $\pm 20$  cm, scanning **500,000 meas./sec**



SZT-R1000

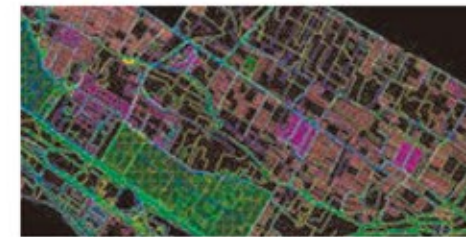
### Inertial Navigation System

to provide **3D high-precision** information of location, speed and orientation

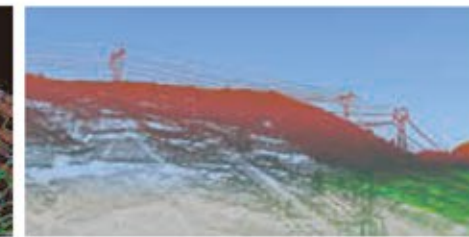
### Time Synchronization Module

to synchronize scanned point data with GNSS data, INS data and imagery data

## APPLICATIONS



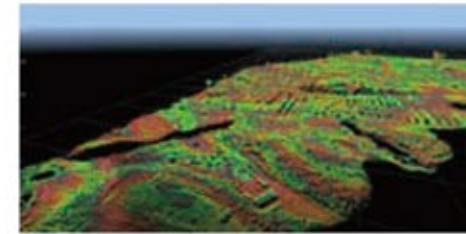
topographic & cadastral survey



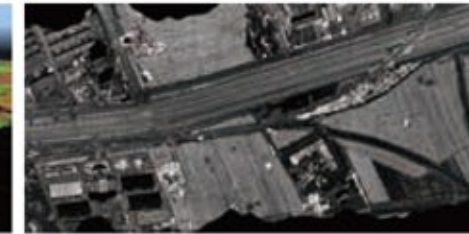
electric power industry application



traffic network control



forestry investigation & planning



emergency response & monitoring



irrigation system development