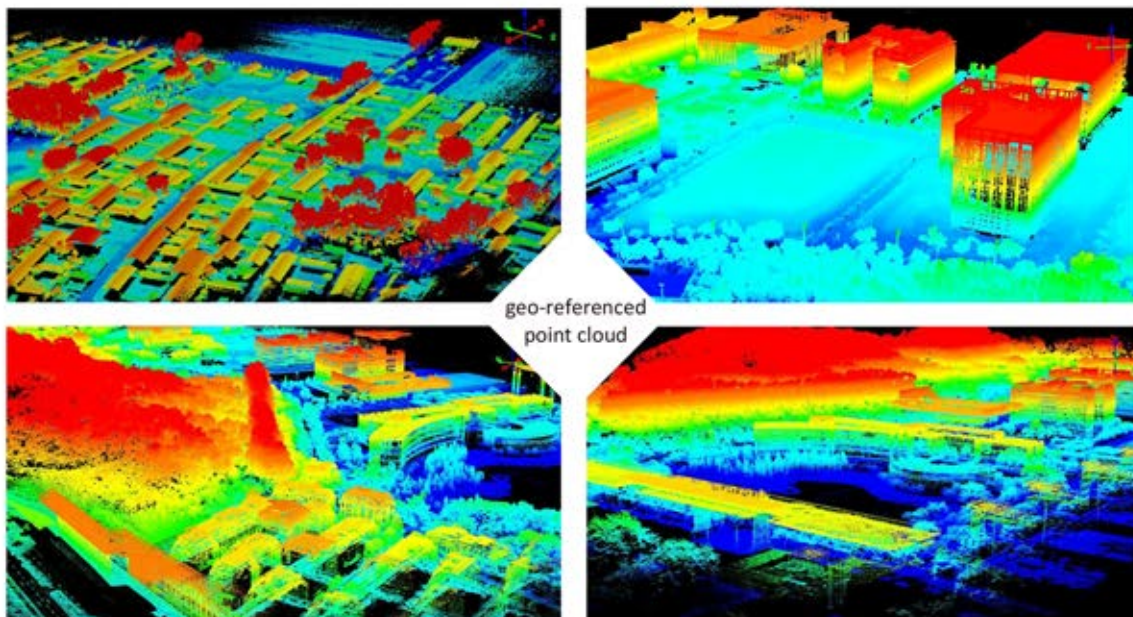


LiDAR-ecoPro

An Economical Solution Tailored to LiDAR Beginners



Model Code..... LiDAR-eco Pro
Application Mode..... UAV-based recommended
Field of View..... 70.4° (H.) × 77.2° (V.)
Net Weight (w/o camera)....approx. 950 g
Dimensions (LxWxH)..... 71 x 100 x 145mm
Power Consumption..... .. 20-50 W
Input Voltage..... DC 12-30V
Operating Temperature..... 0°C up to +40°C
Storage Temperature..... .. -20°C up to +50°C
Constellation Support..... GPS/Glonass/Beidou
Gyroscope Bias Stability..... ±3 deg/hr
Gyroscope Range..... ±490 deg/sec in all axis
Accelerometer Range..... ±16 g in all axis

Scanner Type..... solid statesensor
Laser Safety..... Class 1 (IEC 60825-1:2014)
Laser Wavelength..... 905 nm
Scanner Ingress Protection..... P 67
Scanner Precision..... optimal 2 cm^①
Absolute Accuracy..... down to 5cm, typical 10-20 cm^②
Angular Resolution..... <0.05 deg(1σ)
Measuring Range..... max. 450 m @ 80% reflectivity
Scanning Height..... typical 50-200 m, best below 150 m
Number of Echoes..... max. 3returns
Measurement Rate..... 480,000 pts per sec (dual
return); 720,000 pts per sec
(triple return)

